



December 26, 2011

HOME

A A A PRINT | TRANSLATE | HELP

Google™ Custom Search

Search

Parks Home

Things  
to  
DoPark  
&  
Trail  
DirectoryPark  
Construction  
ProjectsPark  
StewardshipMedia  
CenterVolunteers  
&  
Partnerships

Park Police

 Online Store

Employment

About  
Parks

Contact Parks

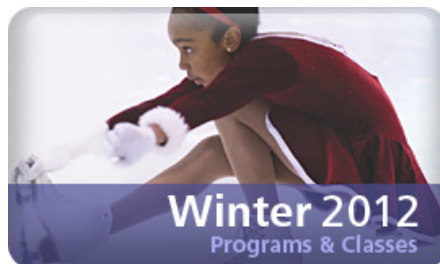
Related  
Links
 NEWSLETTER

 FACEBOOK

 TWITTER

 YOUTUBE

 RSS NEWS

 SHARETHIS


Search

## Announcements

### You Could Be a Champion in the Inaugural Wheaton WINTER TENNIS TOURNAMENT

Grab your racquet and make good use of the holiday weekend at Wheaton Indoor Tennis' very first Winter Tennis Tournament, Friday, December 30 through Sunday, January 1. It's doubles play for adults 18 and up, at four skill levels: 3.0 and under, 3.5, 4.0 and 4.5. Trophies for winners; just \$25 to compete. [Sign up today at ParkPASS.org!](#)



### Deer Management Program for Sligo Stream Valley Park Approved

A new deer management program in Sligo Creek Stream Valley Park Golf Course has been approved and will begin in January, 2012.

Parks Director Mary R. Bradford issued a letter outlining why a deer management program was proposed and addresses concerns outlined in the hundreds of public comments received, including safety and the use of contraception to control deer numbers. [View Director Bradford's letter.](#)

The Department has also issued a press release about the plan's approval, which you can view [here](#).

## Community Corner

### Individual Park Naming and Dedication Policy Approved

The Montgomery County Planning Board recently approved an Individual Park Naming and Dedication Policy for M-NCPPC, Montgomery Parks. The new policy allows certain parks, facilities, buildings, programs and other park assets to be named or dedicated in honor of an individual in exchange for a charitable contribution to the Montgomery Parks Foundation. To read the press release, [click here](#). To view the official policy, [click here](#).

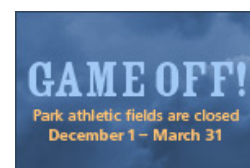
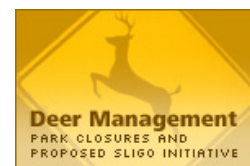
### Artificial Turf Staff Work Group Report Finalized

The Artificial Turf Staff Work Group Report: A Review of Benefits and Issues Associated with Natural and Artificial Turf Rectangular Stadium Fields has been finalized and is available for public review.

A joint Transportation, Infrastructure, Energy and Environment and Education Committee discussion of the Final Report has been scheduled for:

**September 26, 2011, at 2PM**

Council Office Building  
3rd Floor Council Hearing Room  
100 Maryland Avenue  
Rockville, MD 20850



Please visit [www.ParksDeerManagement.org](http://www.ParksDeerManagement.org) to learn more about the Department's Deer Management Program.

### ***Planning a Wedding or Big Event? Book a 2013 Event at a Montgomery Parks Event Center at 2012 Prices***



From now through December 31, 2011, you may book a 2013 date at any one of four [Montgomery Parks Event Centers](#) (the Agricultural History Farm Park in Derwood, Rockwood Manor in Potomac, Seneca

Lodge in Boyds or Woodlawn Manor in Sandy Spring) at the current 2012 rates! Visit [www.ParkEventCenters.com](http://www.ParkEventCenters.com) for more information, or call 301-299-5026.

### **Planning Board Chair Sends Letter to Board of Education Opposing Use of Parkland for New School Sites**

Chair Francoise M. Carrier sent a letter to the Board of Education officially opposing the proposed use of parkland for the construction of new schools in Montgomery County, and specifically referencing Rosemary Hills-Lyttonsville Local Park and Rock Creek Hills Local Park. [View Chair Carrier's letter.](#)

On April 28, Montgomery County Executive Ike Leggett wrote a letter to the BOE outlining his views on the use of Rock Creek Hills Local Park for a new school site. [View his letter.](#)

Also available is [the transfer agreement](#) for the Rock Creek Hills Local Park site which lists the specific transfer conditions should it be needed for a school site.

### **Planning Board Chair Carrier Requests Budget Parity for M-NCPPC at Council Budget Hearing**

Chair Françoise Carrier testified on behalf of M-NCPPC's Parks and Planning Departments at the Council's evening Public Budget Hearing on April 5. [View her statement.](#) For more information, visit [ParksMatter.org](http://ParksMatter.org).

### **Show Us the Parks that Matter to You!**

[Parks Matter](#) to a lot of us for a lot of different reasons. We'd love to know what parks or park facilities matter most to you! Here's how to do it:

1. Download a "Parks Matter" sign from our [Parks Matter site](#) (scroll to the bottom of the page).
2. Take a picture of yourself (or your friends, children, etc.) holding the sign at one of your favorite Montgomery County parks or park facilities.
3. Send us your photo(s). For more info on how to do this, [click here](#).



We'll show off your photos online and send you a "Parks Matter" button and complimentary "Come Play in the Parks" pass

To review the report, click on the links below:

- [Final Report](#)
- [Appendices A-M](#)
- [Appendix N \(Public Comments Received\) Part 1](#)
- [Appendix N \(Public Comments Received\) Part 2](#)
- [Appendix N \(Public Comments Received\) Part 3](#)
- [Appendix N \(Public Comments Received\) Part 4](#)

## **Vision 2030**

### **Vision2030 Project Seeks Public Input to Determine Direction of Future Parks and Recreation Services**

#### **Help Shape the Future of Parks and Recreation in Montgomery County!**

Montgomery Parks (Maryland-National Capital Park and Planning Commission) and the Montgomery County Department of Recreation are interested in your opinions on our parks, open spaces, recreation programming, and trails. Your ideas will help guide the long-term planning for our county's parks and recreation services, facilities, and programs.

For more information or to comment, visit [VisionMontgomery2030.org](http://VisionMontgomery2030.org).

## **Upcoming Community Meetings**

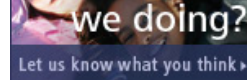
- [There Are No Upcoming Events Available For This Feed](#)

Visit the Montgomery Parks Events Calendar for more information.

## **Press Releases**

[\[Visit our Media Center\]](#)

- [Department of Parks Adopts New Individual Naming and Dedication Policy](#) 12/6/2011
- [Department of Parks Approves Deer Management for Sligo Creek Stream Valley Park; Program to Begin in January 2012](#) 12/5/2011
- [Department of Parks Reports on Efforts to Reduce Stormwater Pollution](#) 12/1/2011
- [Experience the Underground Railroad at Night as Department of Parks Celebrates Maryland Emancipation Day](#) 11/1/2011
- [November Peak Time for Deer-Vehicle Collisions, Department of Parks Reminds Drivers to Take Caution. Offers Tips](#) 10/31/2011
- [Celebrate Maryland Emancipation Day with Montgomery Parks November 4 through November 6](#) 10/27/2011
- [Department of Parks Presented with Proclamation in Honor of Food](#)



- [Department of Parks Nows Accepting Comments on Proposed Addition to Deer Management Operations: Sligo Golf Course](#) 10/11/2011
- [MEDIA ADVISORY: M-NCPPC Montgomery Parks, Montgomery County Council Vice President Roger Berliner Join Randolph Civic Association for Community Day & A Ribbon-Cutting on the New Pavilion and Playground at Randolph Hills Local Park](#) 9/28/2011
- [Department of Parks Announces Seasonal Park Closures for Annual Deer Management Operations. Reminds Drivers to Take Caution](#) 9/27/2011



Montgomery County Department of Parks  
9500 Brunett Ave., Silver Spring, MD 20901  
[www.montgomeryparks.org](http://www.montgomeryparks.org)

[Contact us](#) [Privacy](#) [Accessibility](#) [Terms of Use](#)



Web awards